

For Two Stage Series Turbos as used on Renault R9M Gen2  
1.6 litre Euro 5 & Euro 6b engines for Trafic/Vivaro/NV300 vehicles

## IMPORTANT REPLACEMENT INFORMATION FOR HP AND LP TURBOS

### LP turbos

#### Change 1:

821942- 0007, -0009, -0010 were all replaced by -0011. See page 3 for details of important changes.

#### Change 2:

Now replaced by 883861-5001S. This is a minor change. See pages 4 for details of this change.

### HP turbos

821943-0002 & -0003. See page 5 for details.

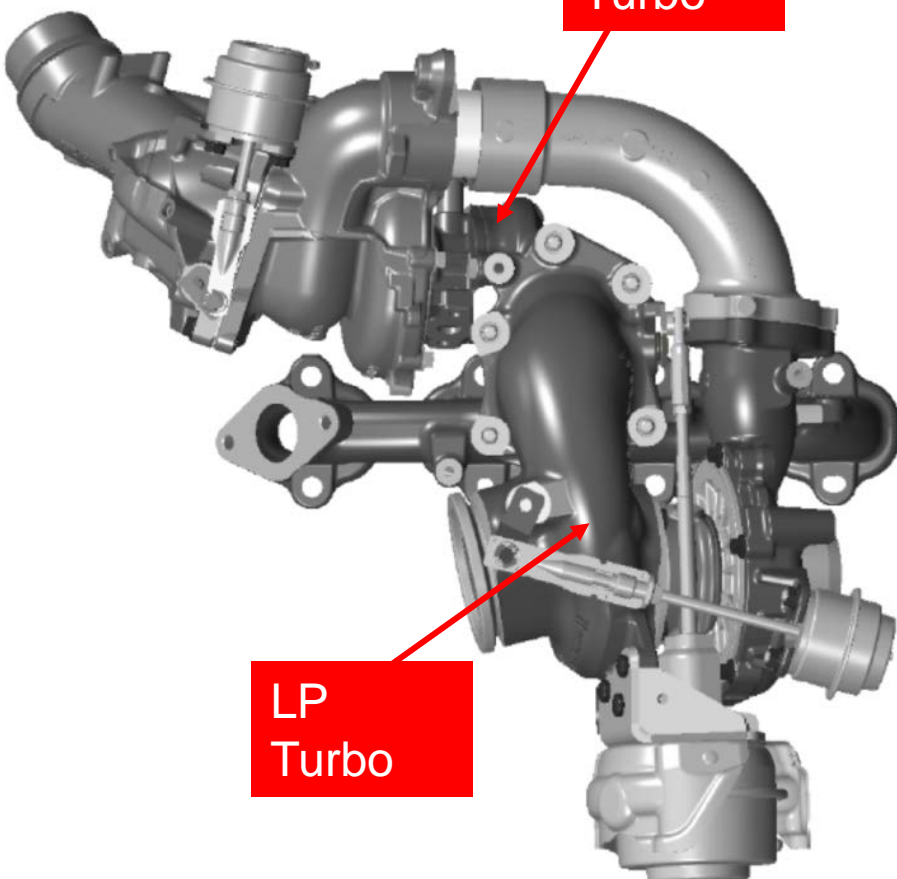
Note: Manufacturers names, models and numbers are shown in this bulletin for reference purposes only and do not imply that any part is the product of that manufacturer

Bulletin Revision Level	Date	Detail of changes:
B	18/02/2020	Corrected graphics to show exact turbos (pages 5 & 6) Corrected number of studs required and corrected gasket graphic (page 8) Corrected Gasket and Stud Kit part number (pages 3 & 8) Updated Euro emissions spec (page 1)

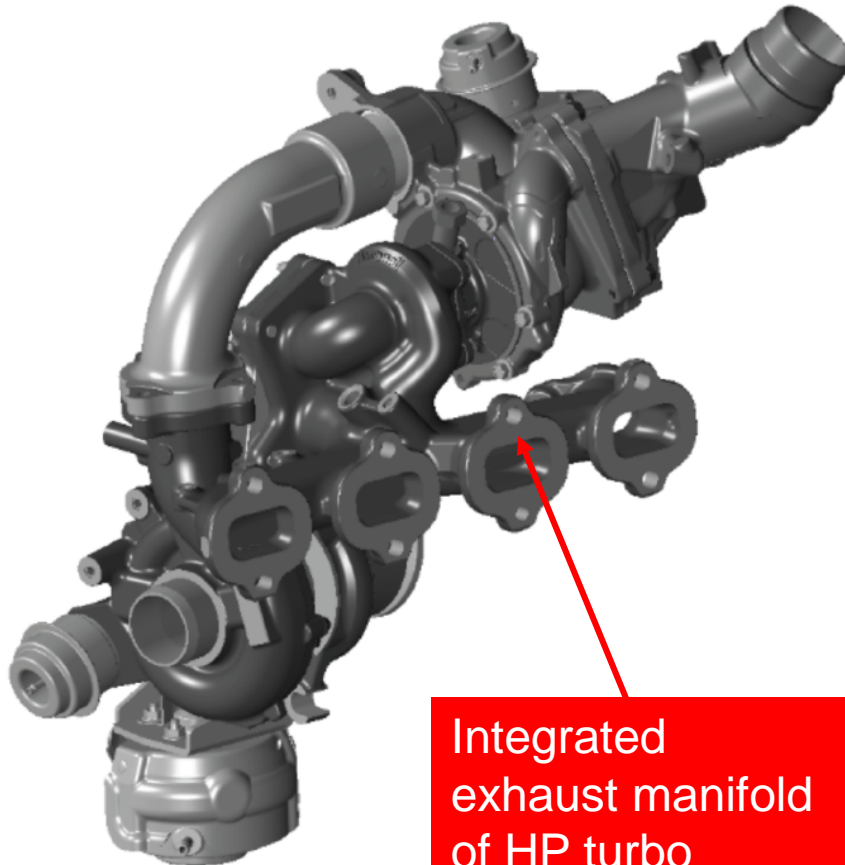
## For Renault TwoStage Series Turbos

- Turbocharger identification

HP  
Turbo

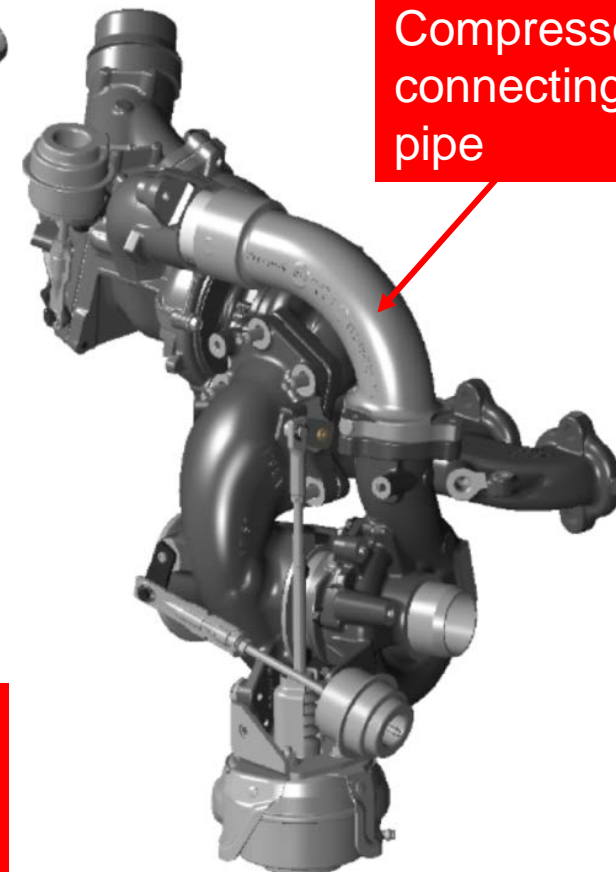


LP  
Turbo



Integrated  
exhaust manifold  
of HP turbo

Compressor  
connecting  
pipe



## For Renault TwoStage Series Turbos

- Summary of changes to 821942-0011
  - The turbine housing material of the LP turbocharger changed.
  - At the same time the connecting studs of the HP turbo changed due to the different expansion rate of the LP housing new material.

**It is vitally important to ensure that the correct HP turbo studs are used when installing a new LP turbo. Failure to do this will lead to loosening of the joint between the two turbos, with consequent exhaust gas leakage and the potential for turbo and vehicle damage and also fire.**

- A new Gasket & Stud Kit, part number 901027-0001 is available to ensure that you use the correct studs
- Page 8 shows the correct replacement procedure

## For Renault TwoStage Series Turbos

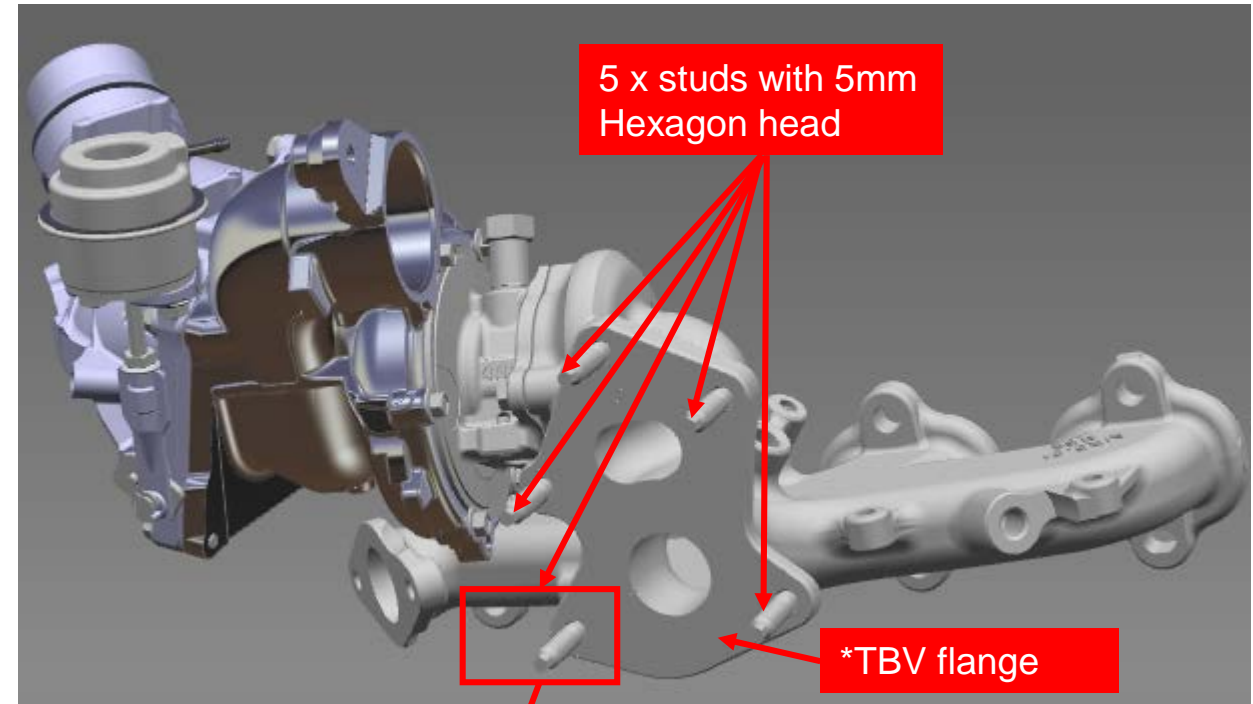
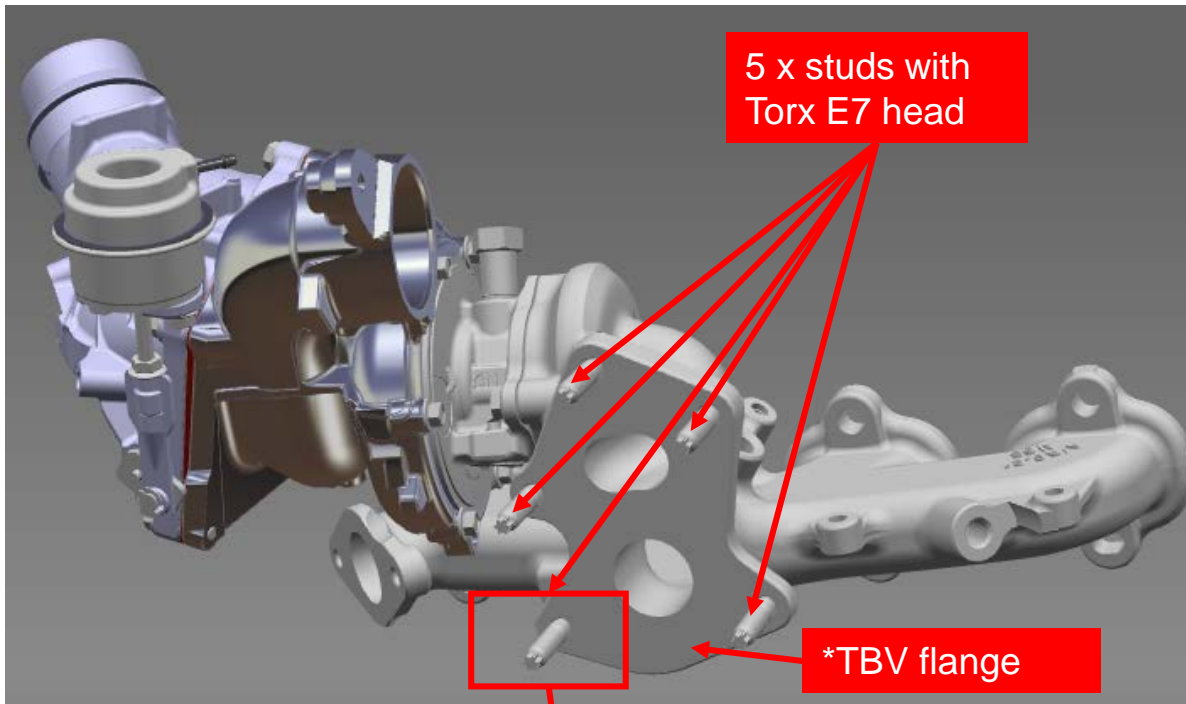


- Summary of changes from 821942-0011 to 883861-0001
  - Garrett internal - change of supplier for component only – no difference in turbocharger fit or performance
  - 883861-0001 is a Direct Service Replacement for 821942-0011

**When using 883861-0001 to replace 821942-0007, -0008 or -0010 the important notes on page 3 apply.**

Configuration of HP Turbos with manifold:  
821943-0002 with Torx E7 studs

821943-0003 with Hexagon head studs

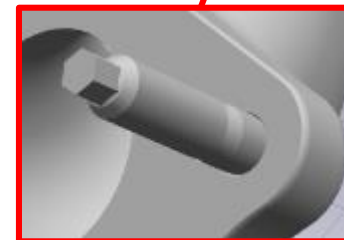


Old HP Turbo 821943-0002

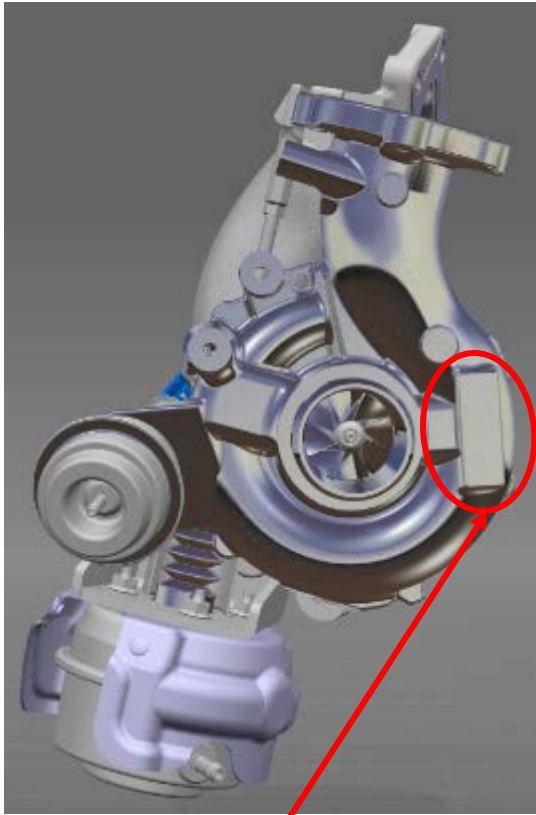
New HP Turbo 821943-0003



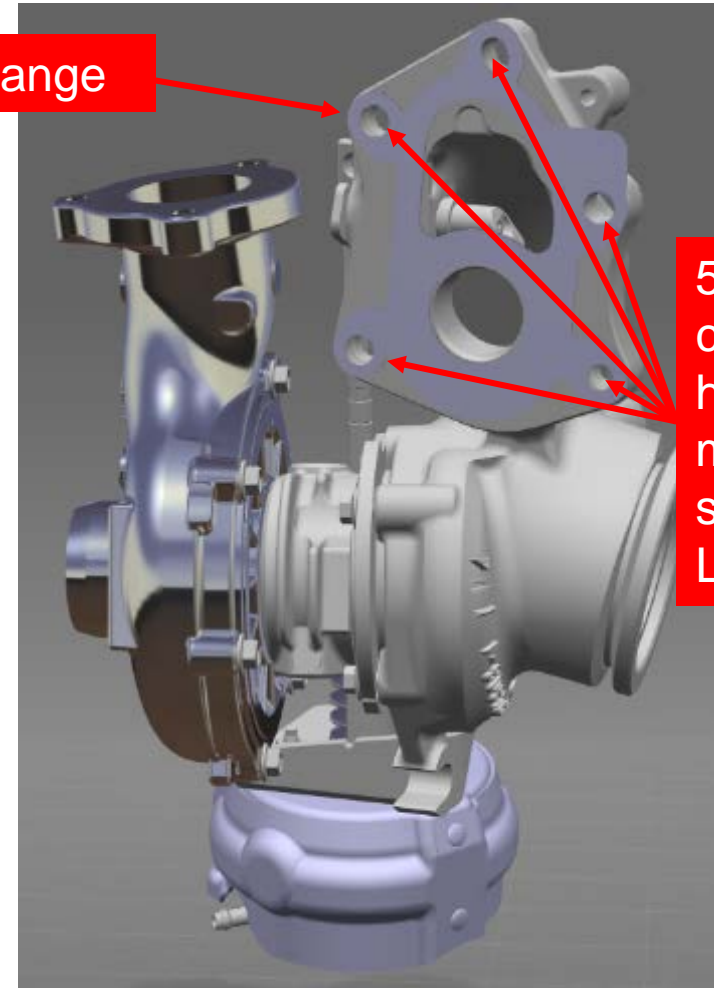
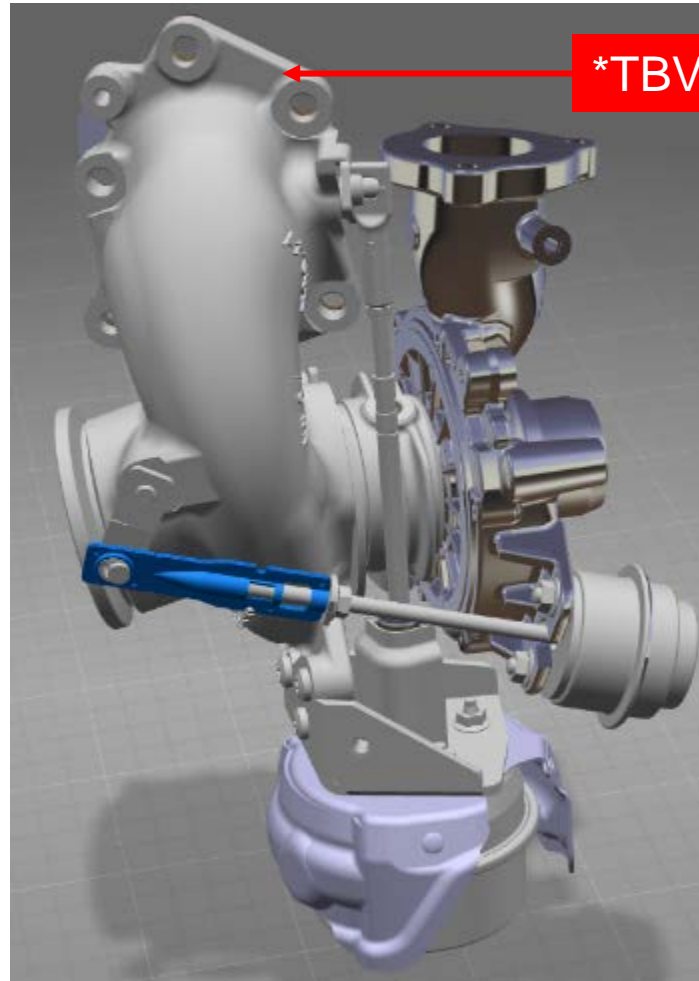
\*TBV = Turbine Bypass Valve



Configuration of LP Turbos:  
821942- 0007, -0009, -0010 with old turbine housing material  
821942-0011 & 883861-0001 with new turbine housing material



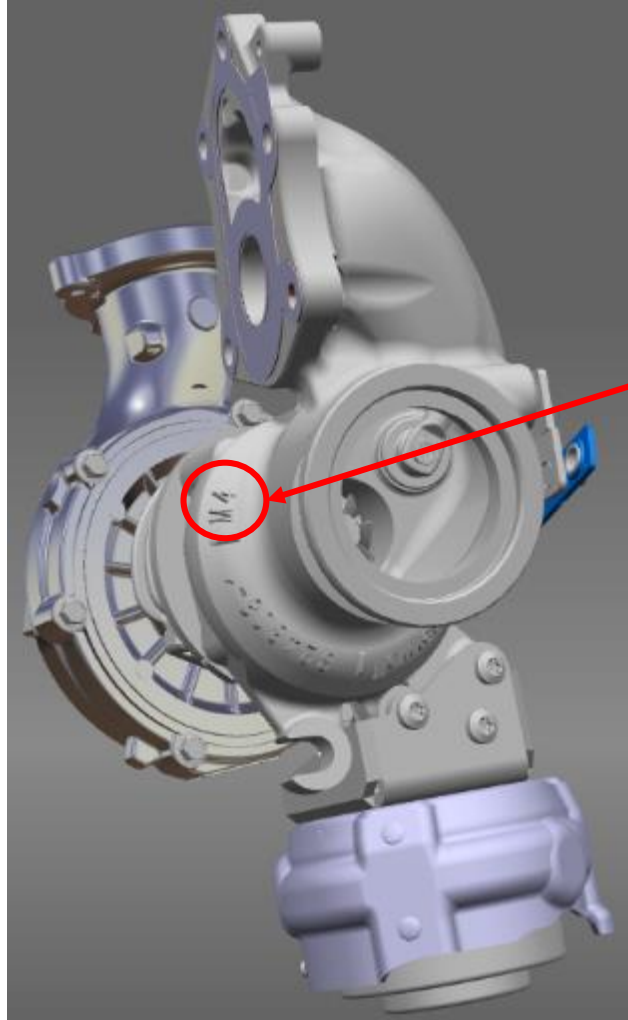
**Note: all LP turbos look the same, so check part number from nameplate on compressor housing or check casting marks as shown on page 7**



**\*TBV = Turbine Bypass Valve**

# Identification of LP Turbos:

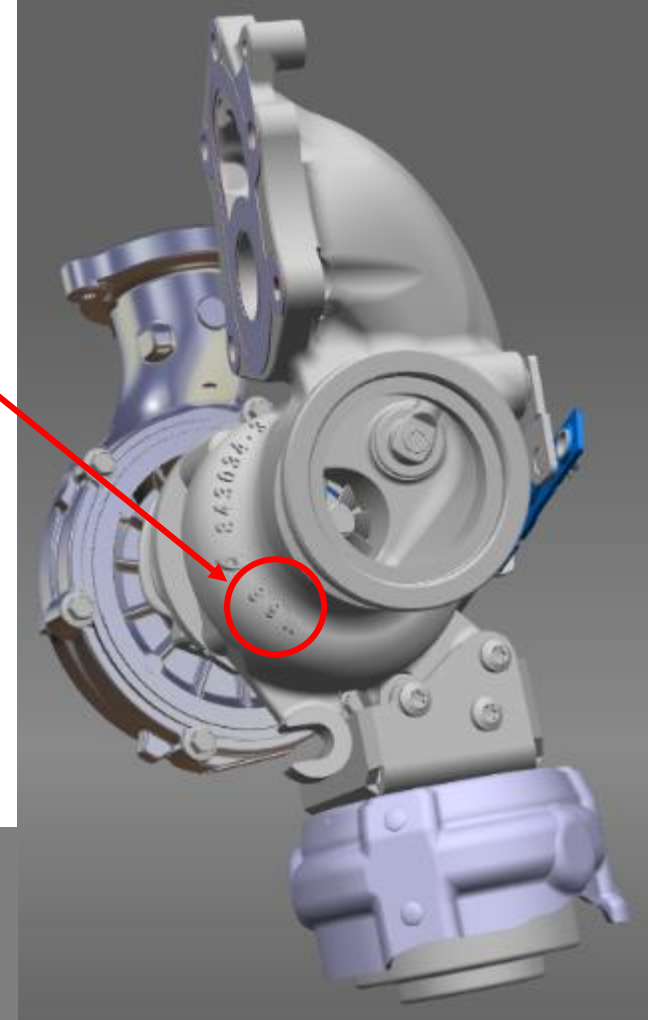
Left: 821942- 0007, -0009, -0010 with old turbine housing material



821942- 0007, -0009, -0010  
with old turbine housing  
material

**Turbine Housing  
casting mark for  
OLD material is  
"M4"**

**Turbine Housing  
casting mark for  
NEW material is  
"M68"**



821942-0011 & 883861-0001  
with new turbine housing  
material

• IMPORTANT REPLACEMENT INFORMATION FOR HP AND LP TURBOS

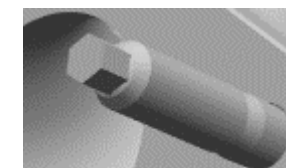
Please read the options below to decide how you must progress:

To replace both old turbos:	REMOVE OLD HP 821943-0002	AND	REMOVE OLD LP 821942-0007, -0009, -0010	<b>Notes:</b> New HP turbos include correct studs New LP turbos include new TBV gasket
	INSTALL NEW HP 821943-5003S	AND	INSTALL NEW LP 883861-5001S Includes new TBV gasket	
To replace only the old LP turbo:	KEEP OLD HP 821943-0002		REMOVE OLD LP 821942-0007, -0009, -0010  INSTALL NEW LP 883861-5001S Includes new TBV gasket	<b>Notes:</b> Remove the 5 x Torx headed studs in the flange of the old HP turbo and replace them with the 5 x Hexagon head studs from the Stud and Gasket Kit before fitting the new LP turbo. Tighten studs to 12.0 – 17.0 Nm.
To replace only the old HP turbo:	REMOVE OLD HP 821943-0002		KEEP OLD LP 821942-0007, -0009, -0010	<b>Notes:</b> Remove the 5 x Hexagon headed studs in the flange of the new HP turbo and replace them with the 5 x Torx E7 head studs from the Stud and Gasket Kit before fitting the new HP turbo. Tighten studs to 12.0 – 17.0 Nm. Use new TBV gasket from kit.
	INSTALL NEW HP 821943-5003S			

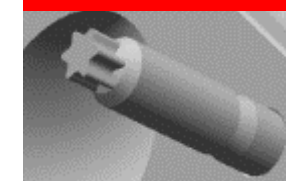
**Note: A new Gasket and Stud Kit, part number 901027-0001 is available to purchase separately.**

This includes: 5 x Studs with Torx E7 head + 5 x Studs with Hexagon head 5mm across flats + 1 x TBV gasket

**Do not use non-standard or incorrect studs on these installations for safety reasons. This would also void warranty.**



Different head shape indicates different material



TBV gasket